



**MATRIX PDM**  
ENGINEERING

# MODULARIZED CONSTRUCTION

Across the process industry, owners continue to look for ways to improve profitability. One such strategy being employed is modular construction – an approach that offers a number of benefits over traditional construction.

## SCHEDULE SAVINGS

- Fit up prior to shipping dramatically lowers field delays
- Hydro and other testing at shop
- Simple foundation design
- Consistent shop workforce improves quality
- Less interruption to operating facility

## COST SAVINGS

- Improved productivity over field equipment
- Fabrication allows for a fixed price bid rather than estimate by field contractors
- Shop labor is more efficient with lower costs than field labor
- Reduced impact of weather issues
- Enhanced material control

**A HIGHER STANDARD IN ENGINEERING.**

# WHAT CAN BE MODULARIZED?



Process Equipment



Filters



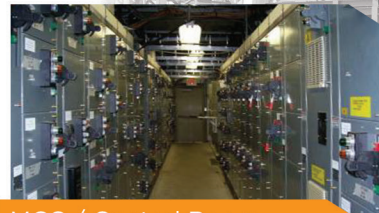
Heat Medium



Pumps



Pipe Racks



MCC / Control Room

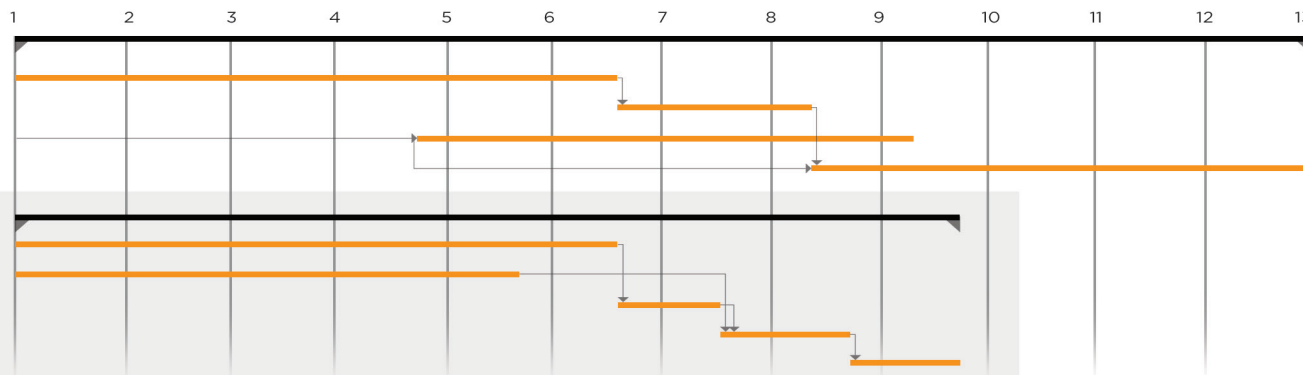
## Stick Built vs. Modular average schedule savings (months)

### Stick Built

Foundations  
Set Equipment  
Install Structural  
Install Piping

### Modular

Foundations  
Module Fabrication  
Install Structural Legs  
Set Modules  
Weld Out Piping



For more Information  
please contact

866 367 6879  
matrixpdm.com