



# THERMAL VACUUM CHAMBERS, A LEGACY OF EXCELLENCE

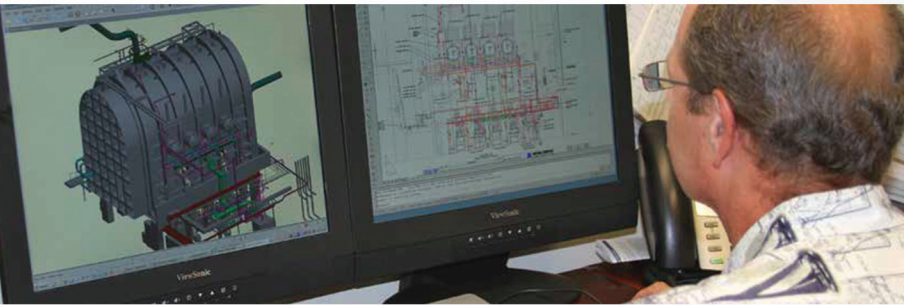
Matrix PDM Engineering provides comprehensive, multi-discipline engineering solutions with industrial leading expertise in thermal vacuum chambers. Over the past 55 years, Matrix PDM has designed over half of the large, field erected thermal vacuum chambers in the United States. During the past 10 years, Matrix PDM has been the leading design and builder of large, thermal vacuum chambers.

Safety. Integrity. Positive relationships. Stewardship. Delivering the best. It is these core values that have forged our reputation for excellence.

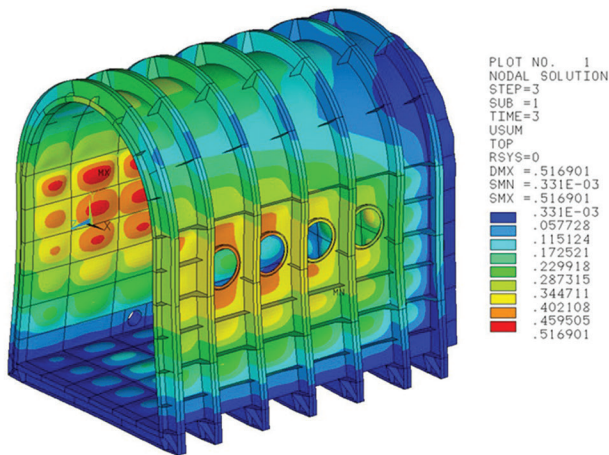
A HIGHER STANDARD IN **ENGINEERING.**

# Matrix PDM has built a solid reputation in the Thermal Vacuum Chamber field

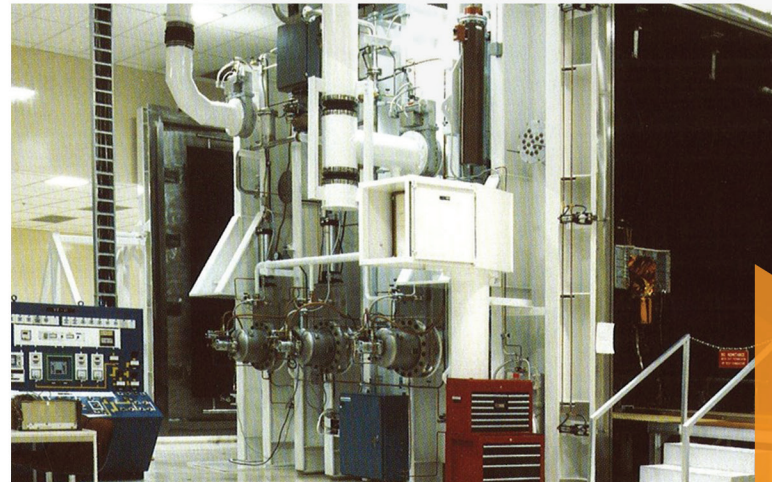
With over 55 years of experience offering technical expertise in design and installation of large, field erected Thermal Vacuum Chambers, Matrix PDM has built a solid reputation for reliable performance and engineering excellence and has completed many innovative projects including mailbox-shaped, rectangular and cylindrical thermal vacuum chambers.



In 2012, Matrix PDM completed the EPC of a 26' wide x 34' tall x 40' long horizontal mailbox-shaped thermal vacuum chamber. Currently, Matrix PDM is working on the EPC of two large mailbox-shaped thermal vacuum chambers for space simulation facilities.



Matrix PDM specializes in large, field-erected chambers and systems for space simulation testing, fusion energy research and manufacturing facilities. These facilities can be designed with a variety of vacuum levels, thermal environments (both cryogenic and elevated), degree of vibration isolation, cleanliness levels and payload handling systems - all tailored to customer requirements. Chambers can be designed for installation into existing buildings or for new greenfield sites.



Markets that Matrix PDM serves include aerospace, government research and manufacturing. Matrix PDM can provide a complete tested turn-key facility including all required engineering disciplines (process engineering, civil/structural, piping, electrical, instrumentation and control).

For more Information  
 please contact  
 866 367 6879  
[matrixpdm.com](http://matrixpdm.com)